

SPECIFICATION OF DR SERIES

APPLICATIONS

Oscillator coil , choke coil , and peaking coil

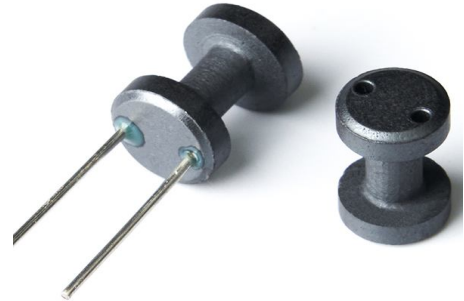


ORDERING CODE

K5B DR2W 4 x 5.5

(1) (2) (3) (4)

- (1) MATERIAL
- (2) PRODUCT CODE
- (3) A DIM.
- (4) B DIM.



SHAPE

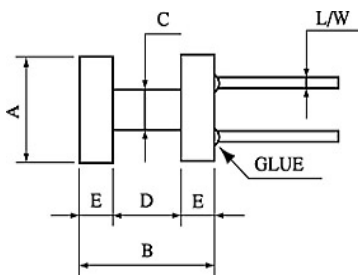


FIG 1

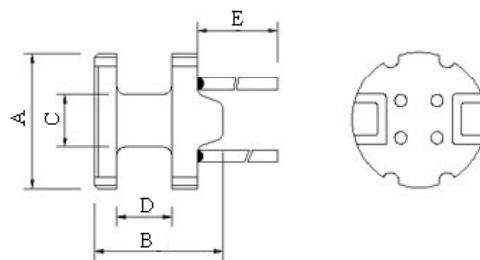


FIG 2

DIMENSIONS

UNIT:mm

NO.	ORDERING CODE	A	B	C	D	E	p	Fig
1	DR2W 3x4(1.5-1.6)	3.00±0.15	4.00±0.20	1.50±0.15	1.60±0.15	1.30±0.15	1.5	1
2	DR2W 4x4(2-1.6)	4.00±0.15	4.00±0.50	2.00±0.15	1.60±0.15	1.20±0.15	1.5	1
3	DR2W 4x5.5(2-2.2)	4.00±0.15	5.50±0.30	2.00±0.15	2.20±0.15	1.50±0.15	1.7	1
4	DR2W 4x6(1.8-3)	4.00±0.15	6.00±0.30	1.80±0.15	3.00±0.15	1.65±0.15	2.0	1
5	DR2W 4.2x6(1.8-2.8)	4.20±0.20	6.00±0.30	1.80±0.15	2.80±0.15	1.65±0.15	2.0	1
6	DR2W 5x7(2-3)	5.00±0.15	7.00±0.30	2.00±0.15	3.00±0.15	1.75±0.15	2.0	1
7	DR2W 5x8(2.5-4)	5.00±0.20	8.00±0.30	2.50±0.15	4.00±0.20	1.75±0.15	2.0	1
8	DR2W 6x8(2.5-4)	6.00±0.15	8.00±0.30	2.50±0.15	4.00±0.15	2.00±0.15	3.0	1
9	DR2W 6x8.5(2.5-5)	6.00±0.15	8.50±0.30	2.50±0.15	5.00±0.15	1.75±0.15	3.0	1
10	DR2W 8x7(3-3.3)	8.00±0.20	7.00±0.30	3.00±0.15	3.30±0.20	1.75±0.15	3.0	1
11	DR2W 8x8(4.5-4)	8.00±0.20	8.00±0.30	4.50±0.30	4.00±0.15	2.00±0.15	5.0	1
12	DR2W 8x9(3.5-5)	8.00±0.20	9.00±0.30	3.50±0.15	5.00±0.15	2.00±0.15	5.0	1
13	DR2W 8x10(4.5-5)	8.00±0.20	10.00±0.30	4.50±0.30	5.00±0.15	2.50±0.15	5.0	1
14	DR2W 8x12(4-7)	8.00±0.20	12.00±0.30	4.00±0.15	7.00±0.20	2.60±0.15	5.0	1
15	DR2W 9x12(4-7)	9.00±0.20	12.00±0.30	4.00±0.15	7.00±0.20	2.60±0.15	5.0	1
16	DR2W 10x12(4-7)	10.00±0.20	12.00±0.30	4.00±0.15	7.00±0.20	2.50±0.15	5.0	1
17	DR2W 10x15(4-9)	10.00±0.20	15.00±0.40	4.00±0.20	9.00±0.20	3.00±0.15	5.0	1
18	DR2W 10x16(4-10.2)	10.00±0.20	16.00±0.40	4.00±0.15	10.20±0.15	2.90±0.15	6.0	1
19	DR2W 13x15(6-9)	13.00±0.30	15.00±0.30	6.00±0.15	9.00±0.20	3.25±0.15	6.0	1
20	DR2W 14x15(5.5-9.2)	14.00±0.20	15.00±0.40	5.50±0.20	9.20±0.20	2.90±0.15	9.0	1
21	DR2W 16x18(6.5-13)	16.00±0.20	18.00±0.30	6.50±0.15	13.00±0.20	4.50±0.15	9.0	1
22	DR2W 18x18(10-10)	18.00±0.50	18.00±0.30	10.00±0.20	10.00±0.20	4.00±0.30	13.0	1
23	DR4W 7.8x11(4.5-7)	7.80±0.30	11.00±0.40	4.50±0.15	7.00±0.20	20.00±1.0	3.5	2

※Other sizes are available upon request.

※All the data listed in this catalogue are for reference only, King Core reserves the right to alter or revise the specifications without prior notification.